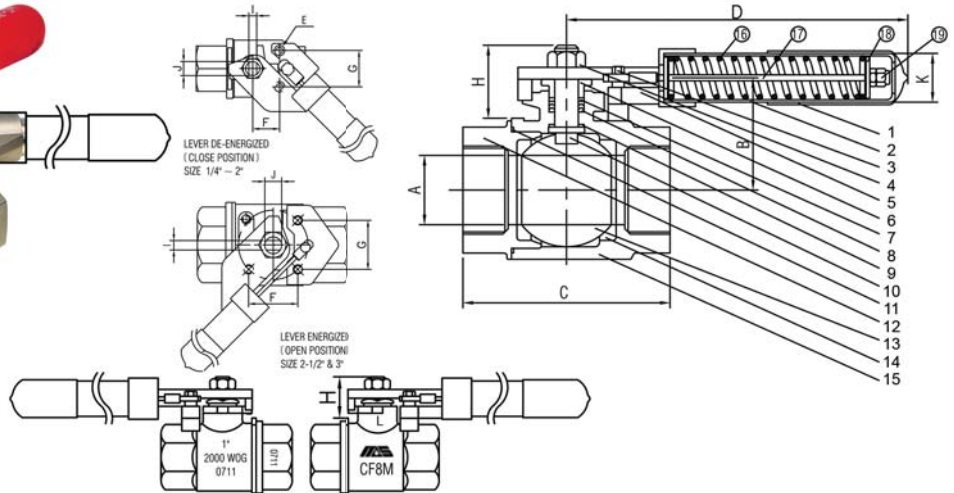
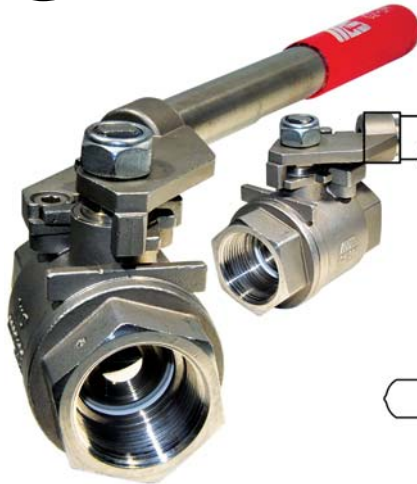


G2-DM

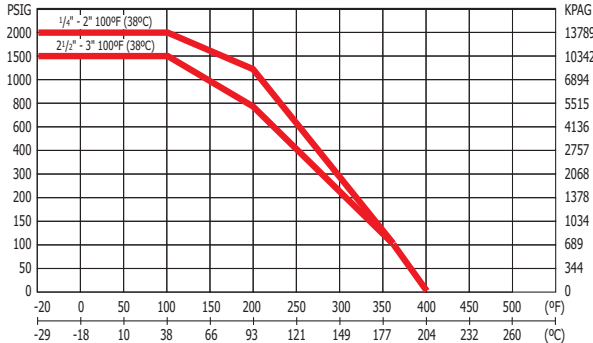
2.5



- Two piece body
- Full port
- NPT threads to ANSI B1.20.1
- Blowout-proof stem
- Adjustable packing nut
- Deadman handle
- Actuator mounting pad
- Floating ball
- Complies with NACE MR-0103 & Supplier Requirements of NACE MR-0175/ISO 15156
- 2000 P.S.I. W.O.G. 1/4" to 2"
- 1500 P.S.I. W.O.G. 2-1/2" & 3"

NAME / MATERIAL		
NO.	PART NAME	MATERIAL
1	Handle Grip	Vinyl
2	Handle Housing	A269 GR. TP304
3	Anchor Screw	A276 TYPE 304
4	Handle Nut	C.S.Plated
5	Anchor	A351 GRADE CF8M
6	Gland Nut	A276 TYPE 304
7	Packing Washer	PEEK
8	Packing	RPTFE 50% S/S FILLED
9	Thrust Washer	PEEK
10	Stem	A276 TYPE 316
11	Gasket	PTFE
12	Cap	A351 GRADE CF8M
13	Ball	A351 GRADE CF8M
14	Seat	R-PTFE 15% GLASS-FILLED
15	Body	A351 GRADE CF8M
16	Spring	A29 GRADE 9260
17	Rod	A276 TYPE 304
18	Washer	A276 TYPE 304
19	Nuts	A194 GRADE 8

PRESSURE TEMPERATURE RATING



DIMENSIONS														
SIZE	DIMENSIONS											CV	WEIGHT KGS/LBS	
	mm/in A	mm/in B	mm/in C	mm/in D	E	mm/in F	mm/in G	mm/in H	mm/in I	mm/in J	mm/in K			
8	1/4"	9.6	26.5	55.4	180.5	M6	12.73	25.4	25.5	5.50	7.70	22.0	7	0.605
		0.374	1.043	2.181	7.106		0.501	1.000	1.004	0.217	0.303	0.866		
10	3/8"	9.6	26.5	55.4	180.5	M6	12.73	25.4	25.5	5.50	7.70	22.0	7	0.595
		0.374	1.043	2.181	7.106		0.501	1.000	1.004	0.217	0.303	0.866		
15	1/2"	12.7	29.0	62.0	180.5	M6	12.73	25.4	25.5	5.50	7.70	22.0	15	0.658
		0.500	1.142	2.441	7.106		0.501	1.000	1.004	0.217	0.303	0.866		
20	3/4"	20	36.2	73.1	232.5	M6	15.8	29.40	32.5	6.50	9.30	22.0	45	0.872
		0.787	1.425	2.878	9.154		0.622	1.157	1.638	0.315	0.492	0.866		
25	1"	25	39.3	86.0	232.5	M6	15.8	29.40	31.0	6.50	9.30	22.0	65	1.112
		0.984	1.547	3.386	9.154		0.622	1.157	1.220	0.256	0.367	0.866		
32	1 1/4"	32	51.3	94.0	287	M8	23.6	35.00	41.6	8.00	12.50	22.0	125	1.556
		1.260	2.021	3.700	11.299		0.929	1.378	1.638	0.315	0.492	0.866		
40	1 1/2"	38	57.2	116.0	290	M8	23.6	49.20	41.0	8.00	12.50	22.0	175	2.655
		1.496	2.253	4.567	11.417		0.929	1.937	1.614	0.315	0.492	0.866		
50	2"	50.8	67.6	134.0	313	M8	23.6	49.2	46.0	10.00	15.60	32.0	380	3.746
		2.000	2.662	5.276	12.323		0.929	1.937	1.811	0.394	0.614	1.260		
65	2 1/2"	65	82.7	164.0	313	M8	70.0	73.0	48.0	12.00	18.80	32.0	500	6.552
		2.559	3.255	6.457	12.323		2.756	2.874	1.890	0.472	0.740	1.260		
80	3"	78	92.7	180.0	313	M8	70.0	73.0	48.0	12.00	18.80	32.0	900	9.672
		3.071	3.649	7.086	12.323		2.756	2.874	1.890	0.472	0.740	1.260		