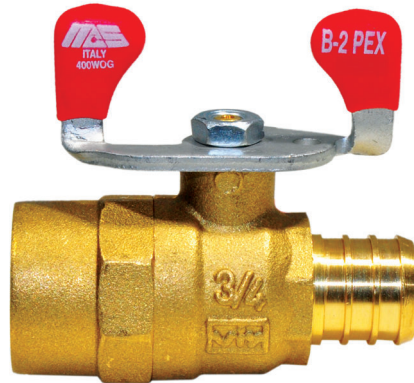
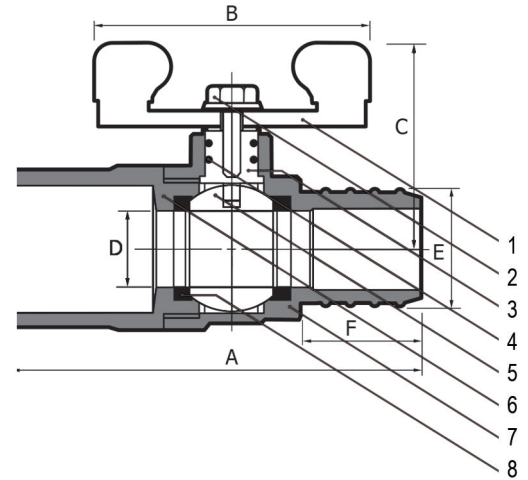


B Series Forged Brass PEX X Solder 400 WOG Ball Valve

B-2PEX



- Forged 2-piece construction
- Reduced port
- B16.22 solder end X ASTM F1807-08 PEX end (CXPEX)
- Blowout-proof stem
- Chrome plated ball
- O-ring stem seals
- *400 WOG



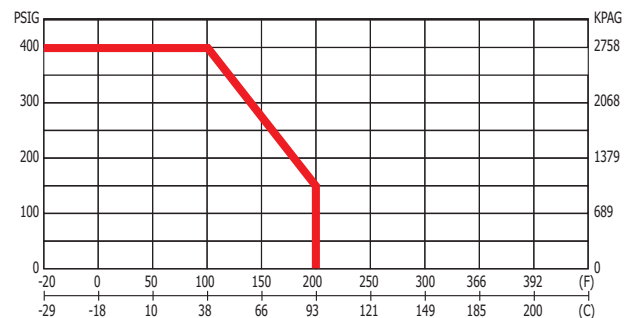
B-2PEX PART/MATERIAL		
NO.	PART NAME	MATERIAL
1	Handle	Steel ASTM A36
2	Lever Screw	Steel ASTM A36
3	Stem	Brass ASTM B124-C37700
4	O-Ring	NBR
5	Ball	Brass ASTM B124-C37700 Chrome Plated
6	Cap	Brass B283-C37700.
7	Body	Brass B283-C37700
8	Seat	PTFE

B-2PEX DIMENSIONS								
Size (mm/in)	A	B	C	D	E	F	CV	Weight lb/kg
1/2	54.1	26.2	39.9	8.9	12.0	16.0	7	0.243
	2.13	1.03	1.57	0.35	0.47	0.63		0.11
3/4	60.9	26.2	41.9	13.5	16.9	16.0	13	0.324
	2.40	1.03	1.65	0.53	0.67	0.63		0.15

Table A1: Pressure Rating for PEX SDR9
Water Distribution Systems

Rated Temperature °C / °F	Pressure Rating for Water KPA / (PSI)
23 / 73	1105 / (160)
82 / 180	690 / (100)
93 / 200	550 / (80)

PRESSURE TEMPERATURE RATING



*NOTES:

- 1) The safe working pressure-temperature rating for a solder joint piping system is dependent not only on valve seat rating but also on the limitation of the solder used for the joints. Refer to ANSI B16-22, Table I.1 for the Maximum recommended pressure-temperature ratings for solder joints.
- 2) Exercise caution during installation by applying heat away from the valve body. Excessive direct flame may damage body seats and seals.
- 3) The safe working pressure-temperature rating for this valve in a PEX piping system is dependent not only on the valve seat rating but also the limitations of the PEX pipe used. Refer to the CSA-B137 standard Table A1 below for these limits.