



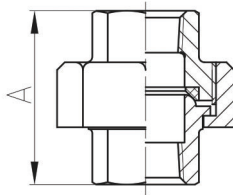
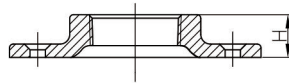
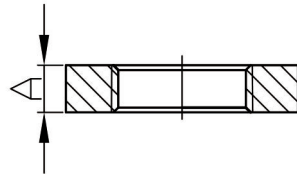
M. A. Stewart & Sons Ltd.
VALVES AND FITTINGS

Malleable Iron Pipe Fittings

Material: ASTM A197/A197M
Dimensions: ASME B16.3, B16.14
Union Dimensions: B16.39
Threads: ASME B1.20.1
Size Available: 1/8"-8"

American Standard Class 150

1.8



310 - Locknut

DIMENSIONS							
Size	Inch	1/8	1/4	3/8	1/2	3/4	1
	mm	6	8	10	15	20	25
Dim. (mm)	A Min	4.8	6.4	7.1	7.9	8.6	9.7
Size	Inch	1 1/4	1 1/2	2	2 1/2	3	4
	mm	32	40	50	65	80	100
Dim. (mm)	A Min	10.7	11.9	13.5	15	17	20.3

321 - Floor Flange

DIMENSIONS							
Size	Inch	1/4	3/8	1/2	3/4	1	1 1/4
	mm	8	10	15	20	25	32
Dim. (mm)	A Min	12	14	14	16	17	19
Size	Inch	1 1/2	2	2 1/2	3	4	
	mm	40	50	65	80	100	
Dim. (mm)	A Min	22	25	26.2	27.3	30.5	

342 - Union with Brass Seat

DIMENSIONS								
Size	Inch	1/8	1/4	3/8	1/2	3/4	1	1 1/4
	mm	6	8	10	15	20	25	32
Dim. (mm)	A Min	32	36.5	41	43.5	49.5	52.5	57.5
Size	Inch	1 1/2	2	2 1/2	3	4	6	
	mm	40	50	65	80	100	150	
Dim. (mm)	A Min	61	70	82	89	98	145	

