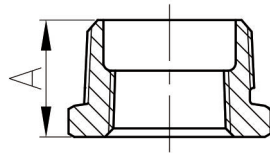


Matériel: ASTM A197/A197M
Dimensions: ASME B16.3, B16.14
Dimensions des unions: B16.39
Filets: ASME B1.20.1
Dimensions disponible: 1/8" - 8"

Standard Américain classe 150

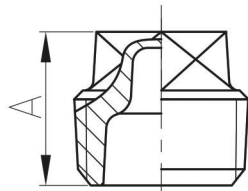
1.7



241 - Réduit MxF

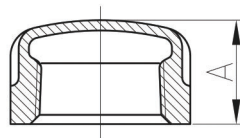
DIMENSIONS								
Diamètre	Po	4X3	3/8X1/8	3/8X1/4	5X4	6X5	1/2X1/8	1/2X1/4
mm	mm	100X80	10X6	10X8	125X100	150X125	15X6	15X8
Dim. (mm)	A	43.7	16.3	16.3	46	51.6	19	19
Diamètre	Po	1/2X3/8	3/4X1/8	3/4X1/4	3/4X3/8	3/4X1/2	1X1/2	1X3/4
mm	mm	15X10	20X6	20X8	20X10	20X15	25X15	25X20
Dim. (mm)	A	19	21.6	21.6	21.6	21.6	25.5	25.5

DIMENSIONS							
Diamètre	Po	1 1/4X3/4	1 1/4X1	1 1/2X1	1 1/2X1 1/4	2X1 1/4	2X1 1/2
mm	mm	32X20	32X25	40X25	40X32	50X32	50X40
Dim. (mm)	A	27.4	27.4	29	29	31	31
Diamètre	Po	2 1/2X2	2 1/2X2	3X2	3X2 1/2	1/4X1/8	8X6
mm	mm	65X40	65X50	80X50	80X65	8X6	200X150
Dim. (mm)	A	38.4	36.6	40.9	38.9	14.8	70



291 - Bouchon

DIMENSIONS								
Diamètre	Po	1/8	1/4	3/8	1/2	3/4	1	1 1/4
mm	mm	6	8	10	15	20	25	32
Dim. (mm)	A	15.5	18.3	20.1	23.9	27.2	31.8	34.5
Diamètre	Po	1 1/2	2	2 1/2	3	4	6	
mm	mm	40	50	65	80	100	150	
Dim. (mm)	A	36.9	39.7	46	49	64.5	71.5	



300 - Capuchon

DIMENSIONS									
Diamètre	Po	1/8	1/4	3/8	1/2	3/4	1	1 1/4	1 1/2
mm	mm	6	8	10	15	20	25	32	40
Dim. (mm)	A Min	13.5	16.0	18.8	22.1	24.6	29.5	32.5	33.8
Diamètre	Po	2	2 1/2	3	4	5	6	8	
mm	mm	50	65	80	100	125	150	200	
Dim. (mm)	A	36.8	43.2	45.7	52.8	58.9	64.8	76.2	