



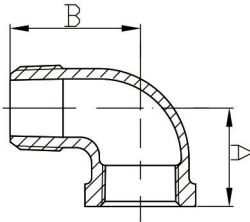
M. A. Stewart & Sons Ltd.
VALVES AND FITTINGS

Malleable Iron Pipe Fittings

Material: ASTM A197/A197M
Dimensions: ASME B16.3, B16.14
Union Dimensions: B16.39
Threads: ASME B1.20.1
Size Available: 1/8" - 8"

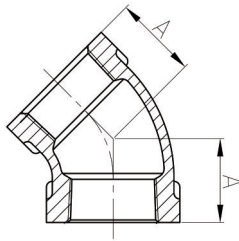
American Standard Class 150

1.2



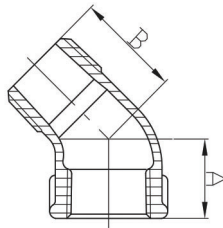
92 - 90° Street Elbow

		DIMENSIONS							
Size	Inch	1/8	1/4	3/8	1/2	3/4	1	1 1/4	
	mm	6	8	10	15	20	25	32	
Dim. (mm)	A	17.5	20.6	24.1	28.5	33.3	38.1	44.5	
	B	25.4	30.2	36.6	41.2	48.0	54.4	62.2	
Size	Inch	1 1/2	2	2 1/2	3	4	6		
	mm	40	50	65	80	100	150		
Dim. (mm)	A	49.3	57.2	68.6	78.2	96.3	130.3		
	B	68.3	82.8	98.0	114.6	144.5	204.0		



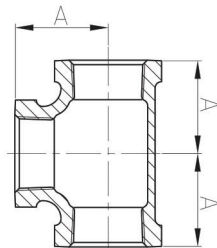
120 - 45° Elbow

		DIMENSIONS							
Size	Inch	1/8	1/4	3/8	1/2	3/4	1	1 1/4	1 1/2
	mm	6	8	10	15	20	25	32	40
Dim. (mm)	A	16	18.5	20.3	22.4	24.9	28.5	32.8	36.3
Size	Inch	2	2 1/2	3	4	5	6	8	
	mm	50	65	80	100	125	150	200	
Dim. (mm)	A	42.7	49.5	55.1	66.3	77.5	87.9	106.7	



121 - 45° Street Elbow

		DIMENSIONS						
Size	Inch	1/8	1/4	3/8	1/2	3/4	1	
	mm	6	8	10	15	20	25	
Dim. (mm)	A	16	18.5	20.3	22.4	24.9	28.5	
	B	21	23.9	26.2	29.2	32.8	37.3	
Size	Inch	1 1/4	1 1/2	2	2 1/2	3	4	
	mm	32	40	50	65	80	100	
Dim. (mm)	A	32.8	36.3	42.7	49.5	55.1	66.3	
	B	43.4	47.8	56.4	65.3	76.2	94.0	



130 - Tee

		DIMENSIONS							
Size	Inch	1/8	1/4	3/8	1/2	3/4	1	1 1/4	1 1/2
	mm	6	8	10	15	20	25	32	40
Dim. (mm)	A	17.5	20.6	24.1	28.5	33.3	38.1	44.5	49.3
Size	Inch	2	2 1/2	3	4	5	6	8	
	mm	50	65	80	100	125	150	200	
Dim. (mm)	A	57.2	68.6	78.2	96.3	114.3	130.3	162	

