



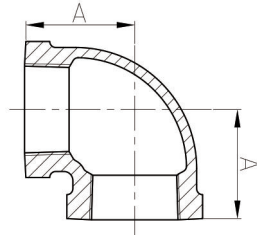
M. A. Stewart & Sons Ltd.
VALVES AND FITTINGS

Malleable Iron Pipe Fittings American Standard Class 150

Material: ASTM A197/A197M
Dimensions: ASME B16.3, B16.14
Union Dimensions: B16.39
Threads: ASME B1.20.1
Size Available: 1/8" - 8"

American Standard Class 150

1.1

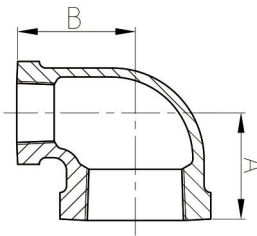


90 - 90° Elbow

DIMENSIONS									
Size	Inch	1/8	1/4	3/8	1/2	3/4	1	1 1/4	1 1/2
	mm	6	8	10	15	20	25	32	40
Dim. (mm)	A	17.5	20.6	24.1	28.5	33.3	38.1	44.5	49.3
Size	Inch	2	2 1/2	3	4	5	6	8	
	mm	50	65	80	100	125	150	200	
Dim. (mm)	A	57.2	68.6	78.2	96.3	114.3	130.3	162	

90R - 90° Reducing Elbow

DIMENSIONS							
Size	Inch	4X1 1/4	4X1 1/2	4X2	4X2 1/2	4X3	3/8X1/8
	mm	100X32	100X40	100X50	100X65	100X80	10X6
Dim. (mm)	A	60	62	69	78	83.8	20.5
	B	85	85	87	90	91.4	21.6
Size	Inch	3/8X1/4	6X4	1/2X1/4	1/2X3/8	3/4X1/4	3/4X3/8
	mm	10X8	150X100	15X8	15X10	20X8	20X10
Dim. (mm)	A	22.4	102	24.6	26.4	26.7	28.5
	B	22.9	125	24.9	26.2	27.4	28.7



DIMENSIONS						
Size	Inch	3/4X1/2	1X1/4	1X3/8	1X1/2	1X3/4
	mm	20X15	25X8	25X10	25X15	25X20
Dim. (mm)	A	30.5	27	30	32	34.8
	B	31	31	32.3	35.5	36.8
Size	Inch	1 1/4X3/8	1 1/4X1/2	1 1/4X3/4	1 1/4X1	1 1/2X1/2
	mm	32X10	32X15	32X20	32X25	40X15
Dim. (mm)	A	32	34	36.8	40.1	35
	B	36.5	38.9	41.2	42.4	41.5

DIMENSIONS						
Size	Inch	1 1/2X3/4	1 1/2X1	1 1/2X1 1/4	2X1/2	2X3/4
	mm	40X20	40X25	40X32	50X15	50X20
Dim. (mm)	A	38.6	41.9	46.2	37.5	40.6
	B	44.5	45.7	47.8	47.5	50.0
Size	Inch	2X1	2X1 1/4	2X1 1/2	2 1/2X3/4	2 1/2X1
	mm	50X25	50X32	50X40	65X20	65X25
Dim. (mm)	A	43.9	48.3	51.3	42	46
	B	51.3	53.3	54.9	57	58.7

DIMENSIONS						
Size	Inch	2 1/2X1 1/4	2 1/2X1 1/2	2 1/2X2	3X3/4	3X1
	mm	65X32	65X40	65X50	80X20	80X25
Dim. (mm)	A	50.5	54.9	60.7	45	50
	B	60	63.8	66.0	65	67.5
Size	Inch	3X1 1/4	3X1 1/2	3X2	3X2 1/2	1/4X1/8
	mm	80X32	80X40	80X50	80X65	8X6
Dim. (mm)	A	55	58	64	71.9	18.8
	B	70	72	73.4	75.9	19.3

