



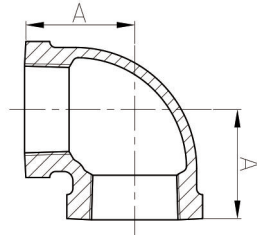
M. A. Stewart & Sons Ltd.
VALVES AND FITTINGS

Malleable Iron Pipe Fittings American Standard Class 300

Material: ASTM A197/A197M
Dimensions: ASME B16.3, B16.14
Union Dimensions: B16.39
Threads: ASME B1.20.1
Size Available: 1/4" - 4"

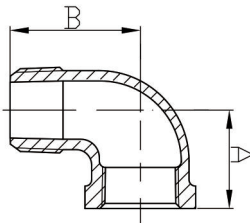
American Standard Class 300

1.9



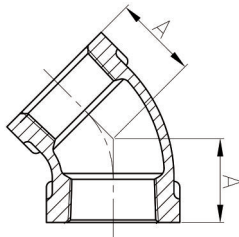
90 - 90° Elbow

DIMENSIONS								
Size	Inch	1/8	1/4	3/8	1/2	3/4	1	1 1/4
	mm	6	8	10	15	20	25	32
Dim. (mm)	A Min	32	36.5	41	43.5	49.5	52.5	57.5
Size	Inch	1 1/2	2	2 1/2	3	4	6	
	mm	40	50	65	80	100	150	
Dim. (mm)	A Min	61	70	82	89	98	145	



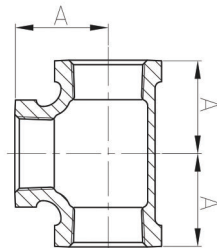
92 - 90° Street Elbow

DIMENSIONS							
Size	Inch	1/4	3/8	1/2	3/4	1	1 1/4
	mm	8	10	15	20	25	32
Dim. (mm)	A	23.9	26.9	31.8	36.6	41.4	49.3
	B	36.6	41.4	50.8	55.6	65.0	73.2
Size	Inch	1 1/2	2	2 1/2	3		
	mm	40	50	65	80		
Dim. (mm)	A	54.1	63.5	74.7	85.9		
	B	79.5	93.7	114.3	130.3		



120 - 45° Elbow

DIMENSIONS							
Size	Inch	1/4	3/8	1/2	3/4	1	1 1/4
	mm	8	10	15	20	25	32
Dim. (mm)	A	20.6	22.4	25.4	28.7	33.3	38.1
Size	Inch	1 1/2	2	2 1/2	3	4	8
	mm	40	50	65	80	100	200
Dim. (mm)	A	42.9	50.8	57.2	63.5	71	106.7



130 - Tee

DIMENSIONS							
Size	Inch	1/4	3/8	1/2	3/4	1	1 1/4
	mm	8	10	15	20	25	32
Dim. (mm)	A	23.9	26.9	31.8	35.6	41.4	49.3
Size	Inch	1 1/2	2	2 1/2	3	4	8
	mm	40	50	65	80	100	200
Dim. (mm)	A	54.1	63.5	74.7	85.9	114	162

