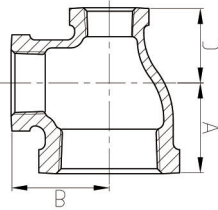


Matériel: ASTM A197/A197M
Dimensions: ASME B16.3, B16.14
Dimensions des unions: B16.39
Filets: ASME B1.20.1
Dimensions disponible: 1/8" - 8"

Standard Américain classe 150

1.5

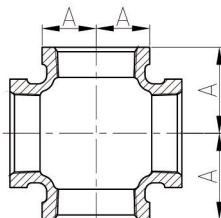


130R - Tés réduit

DIMENSIONS						
Diamètre	Po	4X3X2	3/4X1/2X1	1X1/2X3/4	11/4X1/2X3/4	11/4X1/2X11/4
	mm	100X80X50	20X15X25	25X15X20	32X15X20	32X15X25
Dim. (mm)	A	67	38	34.8	35	40.1
	B	83.5	34	36.8	38	42.4
	C	60	33	31	29	34.5
Diamètre	Po	11/4X3/4X1/2	11/4X3/4X1	11/4X1X1/2	11/4X1X3/4	11/2X1/2X1
	mm	32X20X15	32X20X25	32X25X15	32X25X20	40X15X25
Dim. (mm)	A	40	40.1	34.0	36.8	44
	B	42.5	42.4	38.9	41.2	46
	C	37	36.8	32	34.8	34

DIMENSIONS						
Diamètre	Po	11/2X3/4X1	11/2X3/4X11/4	11/2X1X1/2	11/2X3/4X11/4	11/2X11/4X1/2
	mm	40X20X25	40X20X32	40X25X15	40X25X32	40X32X15
Dim. (mm)	A	44	46	37	45	35.8
	B	46	48	41	47	42.2
	C	35	41	32	41.5	34.0
Diamètre	Po	11/2X11/4X3/4	11/2X11/4X1	11/2X11/4X2	2X1X11/2	2X11/4X1
	mm	40X32X20	40X32X25	40X32X50	50X25X40	50X32X25
Dim. (mm)	A	38.6	41.9	55	51.3	40
	B	44.5	45.7	51.5	54.9	51
	C	36.3	40.1	53.5	45.7	44

DIMENSIONS						
Diamètre	Po	2X11/4X11/2	2X11/2X1/2	2X11/2X3/4	2X11/2X1	2X11/2X11/4
	mm	50X32X40	50X40X15	50X40X20	50X40X25	50X40X32
Dim. (mm)	A	51.3	38	39.5	43.9	48.3
	B	54.9	48	49	51.3	53.3
	C	47.8	36	37.5	41.9	46.2
Diamètre	Po	21/2X2X1/2	21/2X2X1	21/2X2X11/4	3X21/2X2	
	mm	65X50X15	65X50X25	65X50X32	80X65X50	
Dim. (mm)	A	57	53	57	64.0	
	B	64	60	64	73.4	
	C	52	53	52	60.7	



180 - Croix

DIMENSIONS							
Diamètre	Po	1/8	1/4	3/8	1/2	3/4	1
	mm	6	8	10	15	20	25
Dim. (mm)	A	17.5	20.6	24.1	28.5	33.3	38.1
	Po	1 1/4	1 1/2	2	2 1/2	3	4
Dim. (mm)	mm	32	40	50	65	80	100
	A	44.5	49.3	57.2	68.6	78.2	96.3