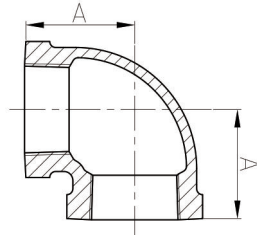


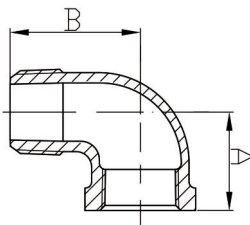
### Standard Américain classe 300

# 1.9



### 90 - Coude 90

DIMENSIONS								
Diamètre	Po	1/8	1/4	3/8	1/2	3/4	1	1 1/4
	mm	6	8	10	15	20	25	32
Dim. (mm)	A Min	32	36.5	41	43.5	49.5	52.5	57.5
	Diamètre	Po	1 1/2	2	2 1/2	3	4	6
	mm	40	50	65	80	100	150	
Dim. (mm)	A Min	61	70	82	89	98	145	

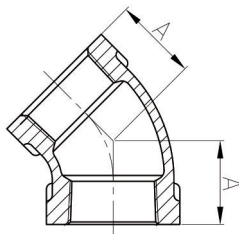


### 92 - Coude MxF 90

DIMENSIONS							
Diamètre	Po	1/4	3/8	1/2	3/4	1	1 1/4
	mm	8	10	15	20	25	32
Dim. (mm)	A	23.9	26.9	31.8	36.6	41.4	49.3
	B	36.6	41.4	50.8	55.6	65.0	73.2
Diamètre	Po	1 1/2	2	2 1/2	3		
	mm	40	50	65	80		
Dim. (mm)	A	54.1	63.5	74.7	85.9		
	B	79.5	93.7	114.3	130.3		

### 92 - Coude 45

DIMENSIONS							
Diamètre	Po	1/4	3/8	1/2	3/4	1	1 1/4
	mm	8	10	15	20	25	32
Dim. (mm)	A	20.6	22.4	25.4	28.7	33.3	38.1
	Diamètre	Po	1 1/2	2	2 1/2	3	4
	mm	40	50	65	80	100	200
Dim. (mm)	A	42.9	50.8	57.2	63.5	71	106.7



### 130 - Tés

DIMENSIONS							
Diamètre	Po	1/4	3/8	1/2	3/4	1	1 1/4
	mm	8	10	15	20	25	32
Dim. (mm)	A	23.9	26.9	31.8	35.6	41.4	49.3
	Diamètre	Po	1 1/2	2	2 1/2	3	4
	mm	40	50	65	80	100	200
Dim. (mm)	A	54.1	63.5	74.7	85.9	114	162

